



Find your dream home.

0000 Dallas Cherryville Highway Bessemer City, NC 28016

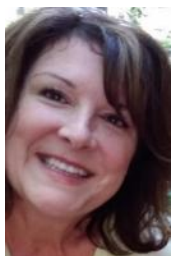
\$350,000

15.52 acres with no city taxes or HOA located on Hwy 279 (Dallas Cherryville Hwy) in Gaston County. Conveniently located within 5 miles of US 321, close proximity to I-85, Hwy 74 and 35+/- minutes to Charlotte and Hickory. This parcel has 320' of consistent road frontage. A great opportunity to develop for resale or a private estate, for hunting, or horse/cattle farm, or for business//industry. Currently zoned residential with CH Overlay- typically for commercial development. Endless opportunities await! An adjoining parcel (#201720) is also available for purchase and includes 16.84 acres with over 329 feet of total road

- Price: \$350,000
- MLS #: 4100755

See the full property here:

<https://tour.corelistingmachine.com/home/5DKPAX>



Name: Kimberly Wyont

Cell: (704) 214-2427

Email: kimberlywyontrealtor@gmail.com

Website: kimberlywyont.premiersouth.net

Office: 109 S. Main Street
Belmont, NC 28012
(704) 610-3885

